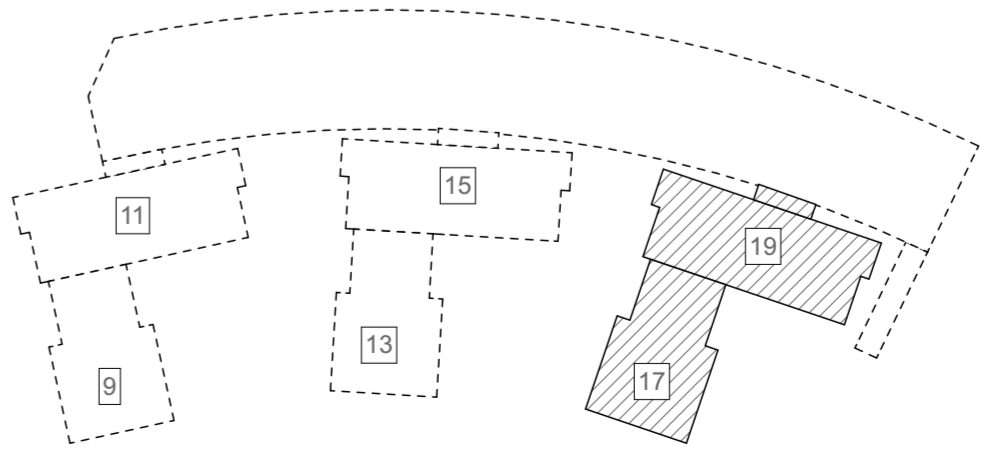


149 ALMENN STÆÐI ALLS
84 Í KJALLARA
65 Á PLANI
+11 STÆÐI
HREYFIHAMLADRA

Teikningaskrá // Aðaluppdrættir C			
BLAÐSÍÐA	HEITI	ÚTGÁFA	Dagsetning
A.0	Byggingarlýsing	-	
A.1	Afstöðumynd	-	
A.2	Lóðamynd	-	
A.3.1	1.hæð	-	
A.3.2	2.hæð	-	
A.3.3	3.hæð	-	
A.3.4	4.hæð	-	
A.3.5	5.hæð	-	
A.3.6	6.hæð	-	
A.3.7	7.hæð, 8.hæð - þakmynd	-	
A.4.1	Snið C-01	-	
A.4.2	Snið C-02	-	
A.4.3	Snið C-03	-	
A.5.1	Útlit C.SA // Suðaustur	-	
A.5.2	Útlit C.NV // Norðvestur	-	
A.5.3	Útlit C.NA // Norðaustur	-	
A.5.4	Útlit C.SV // Suðvestur	-	
A.6.1	Skráningartafla - Mhl 06	-	
A.6.2	Skráningartafla - Mhl 06 07	-	



AFSTÖÐUMYND

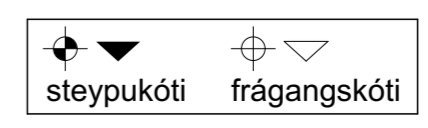
1:500

+Arkitektar

Hringhamar 17-19
Hafnarfirði
Afstöðumynd

dags. 9.11.2022
mkv. 1:1, 1:500
teikn. AB, AK, ÁK, AMK, JK
verknr. 2201

Öl má samrýmist á staðnum. Hafa skal samband við hönnuði ef ósamræmis gæfir.





+Arkitektar

Hringhamar 17-19
Hafnarfirði
Lóðamynd

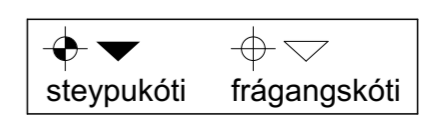
dags. 9.11.2022
mkv. 1:200
teikn. AB, AK, ÁK, AMK, JK
verknr. 2201

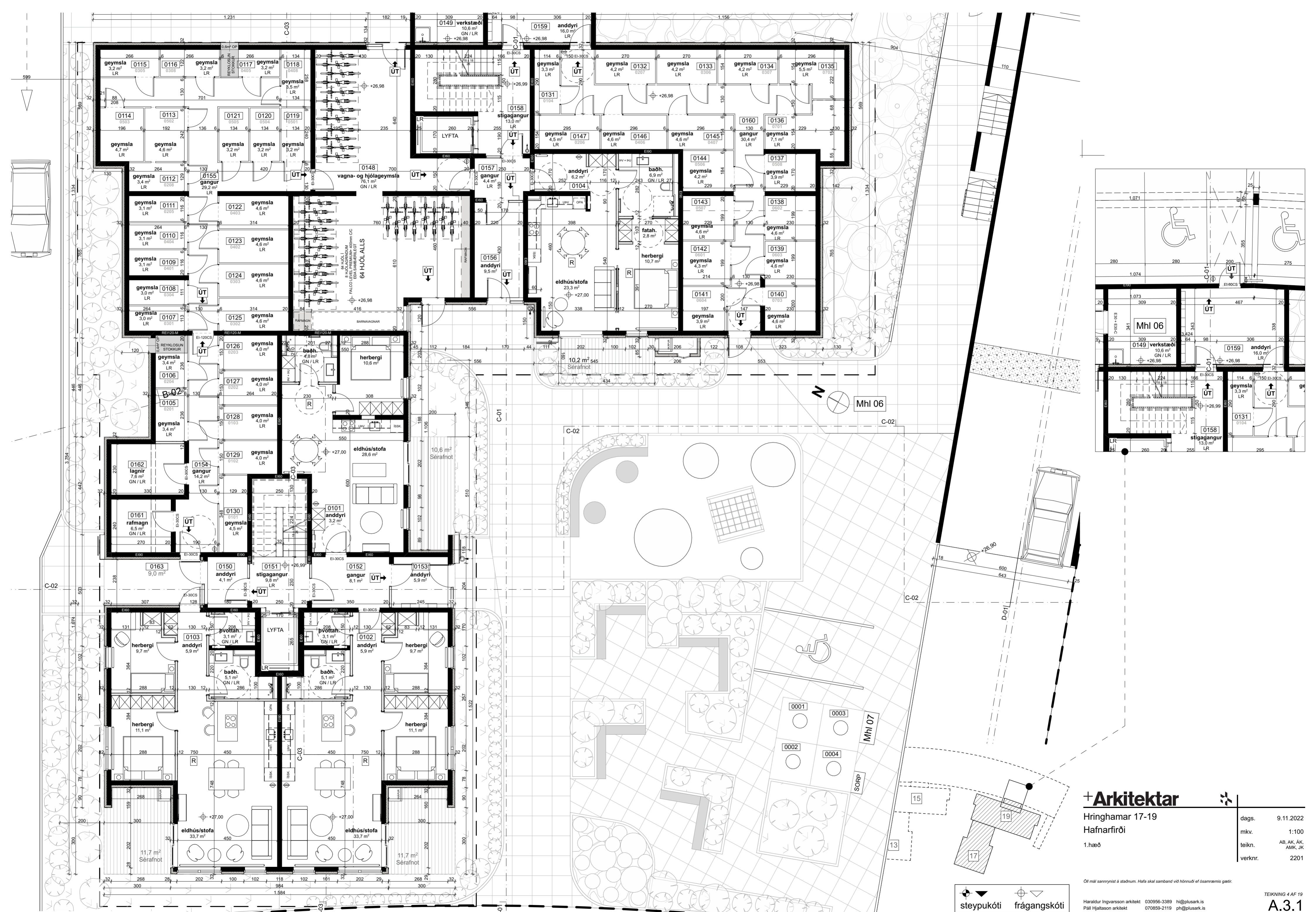
Öf máli samþrygð á staðnum. Hafa skal samband við hönnuði ef ósamræmis gæfir.

Haraldur Ingvarsson arkitekt 030956-3389 hi@plusark.is
Páll Hjaltason arkitekt 070859-2119 ph@plusark.is

TEIKNING 3 AF 19
A.2

Fiskistóð 31 101 Reykjavík 562-5959 www.plusark.is





+Arkitektar

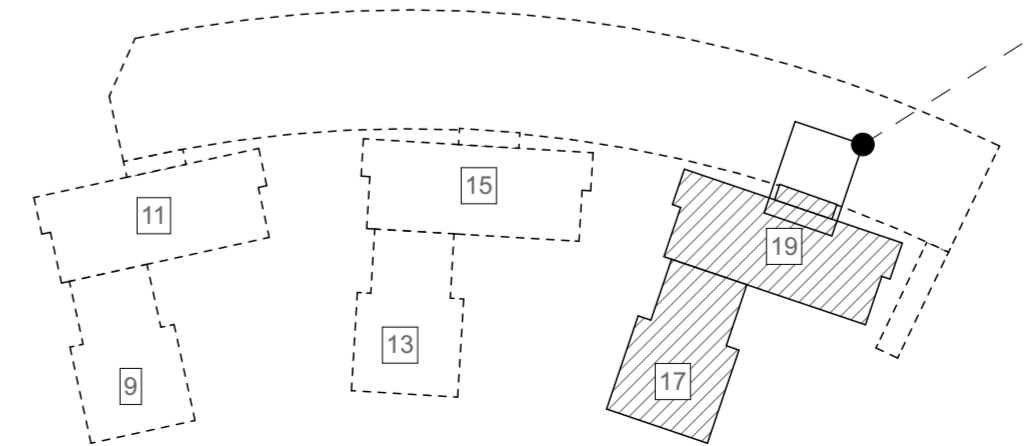
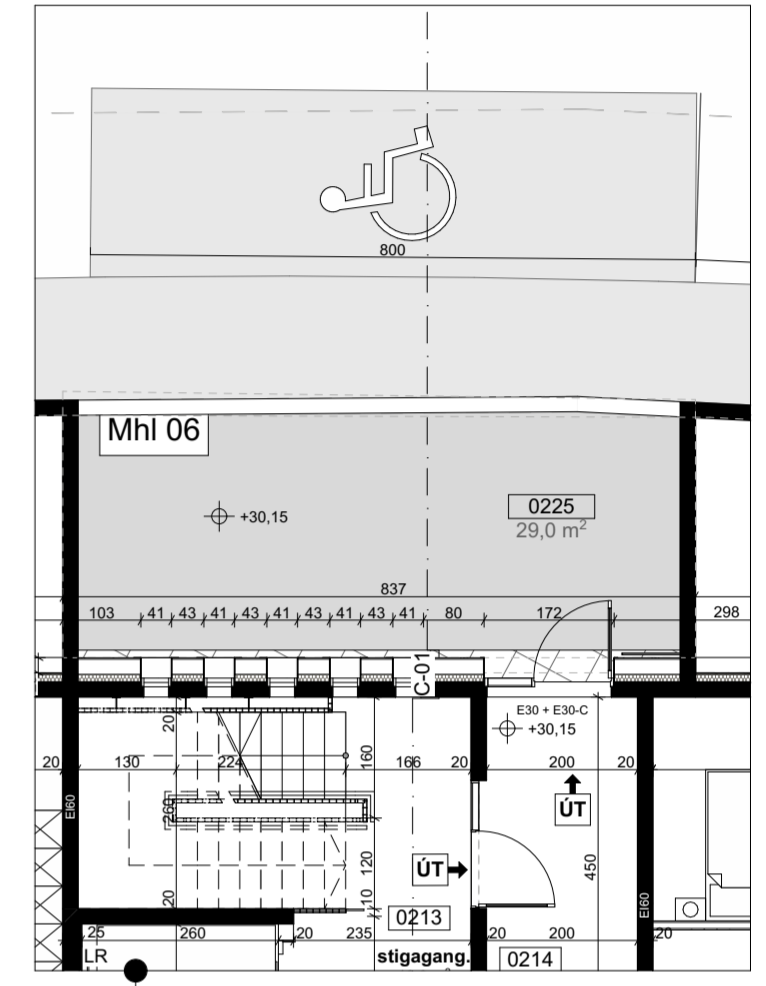
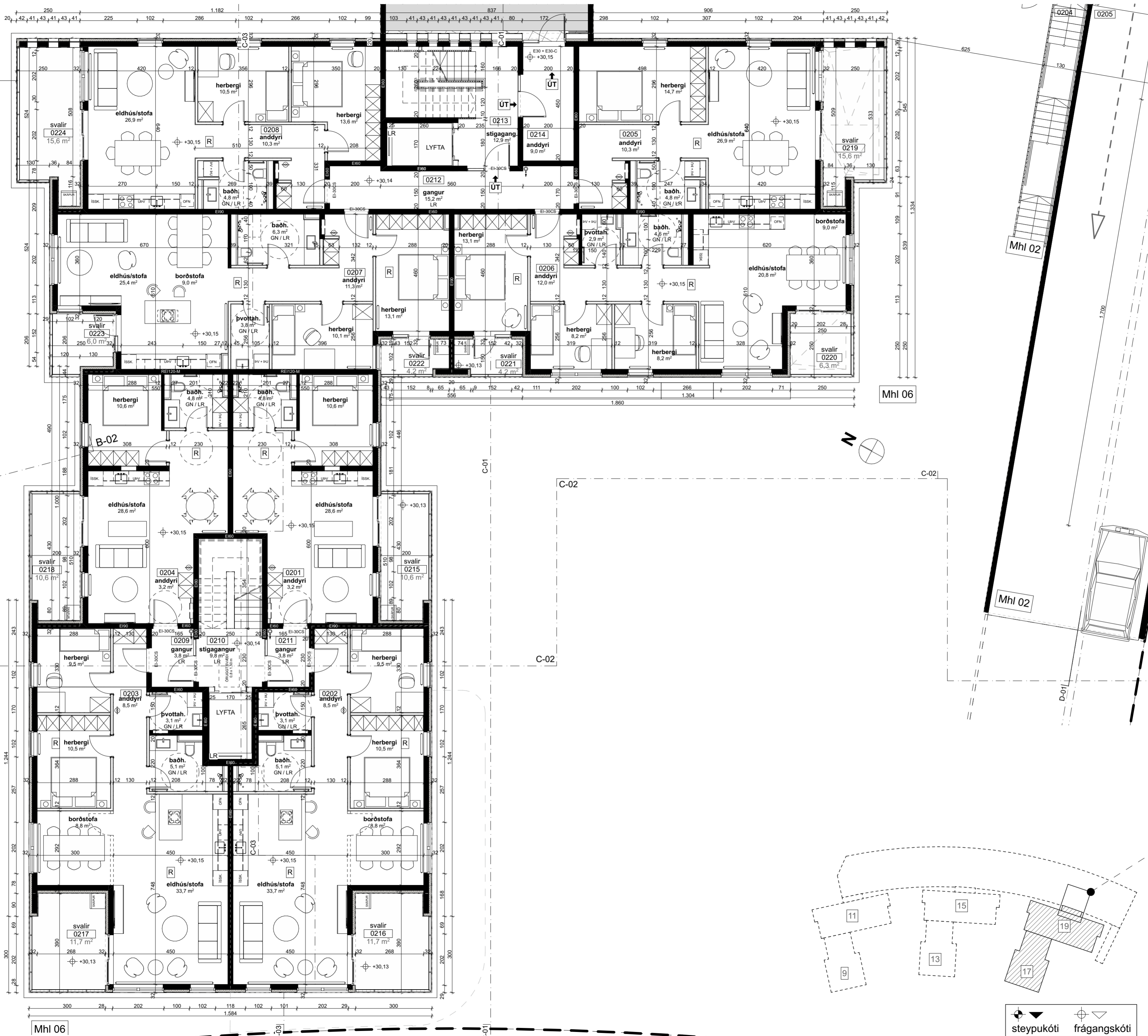
Hringhamar 17-19
Hafnarfirði
1.hæð

dags.	9.11.2022
mkv.	1:100
tekn.	AB, AK, AK, AMK, JK
verknr.	2201

Öf máli samþykkið af stjórnun. Hafa skal samband við hönnuði ef ósamræmis gæti.

Haraldur Ingvarsson arkitekt 030956-3389 hi@plusark.is
Páll Hjaltason arkitekt 070859-2119 ph@plusark.is

TEIKNING 4 AF 19
A.3.1



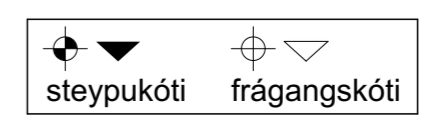
+Arkitektar

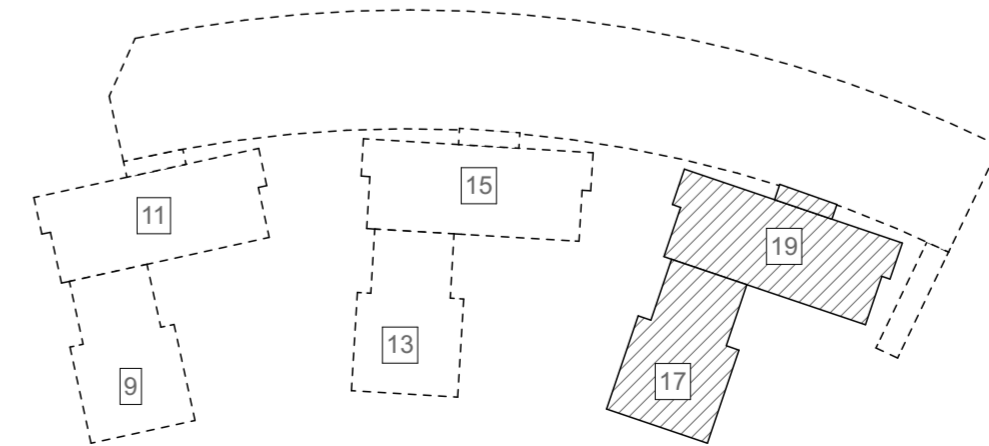
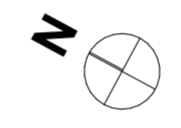
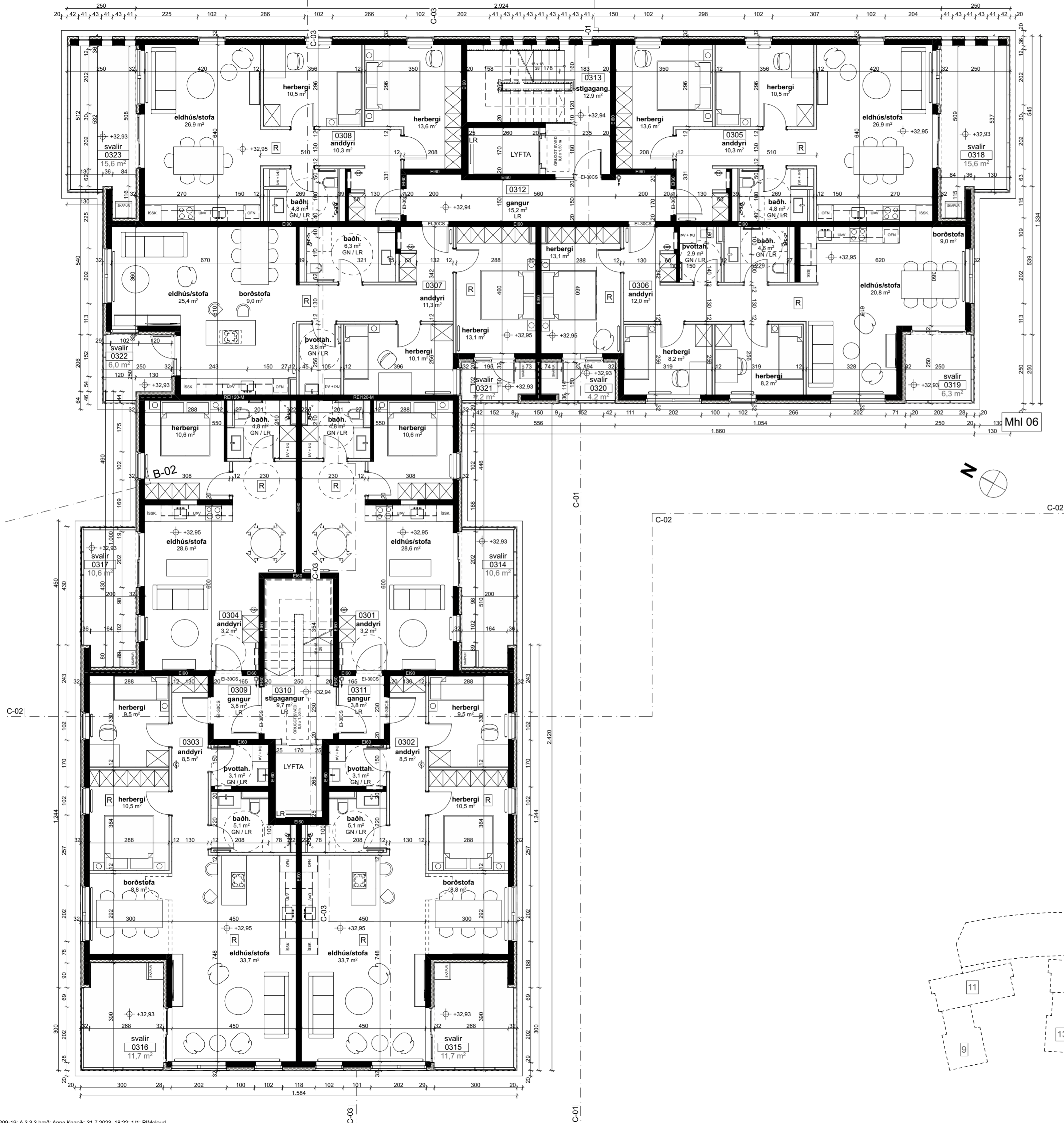
Hringhamar 17-19
Hafnarfirði

2.hæð

dags.	9.11.2022
mkv.	1:100
teikn.	AB, AK, ÁK, AMK, JK
verknr.	2201

Öl má samrýmist á staðnum. Hafa skal samband við hönnuði ef ósamræmis gæti.



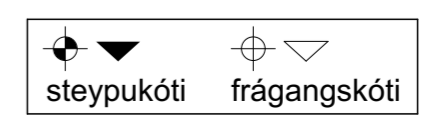


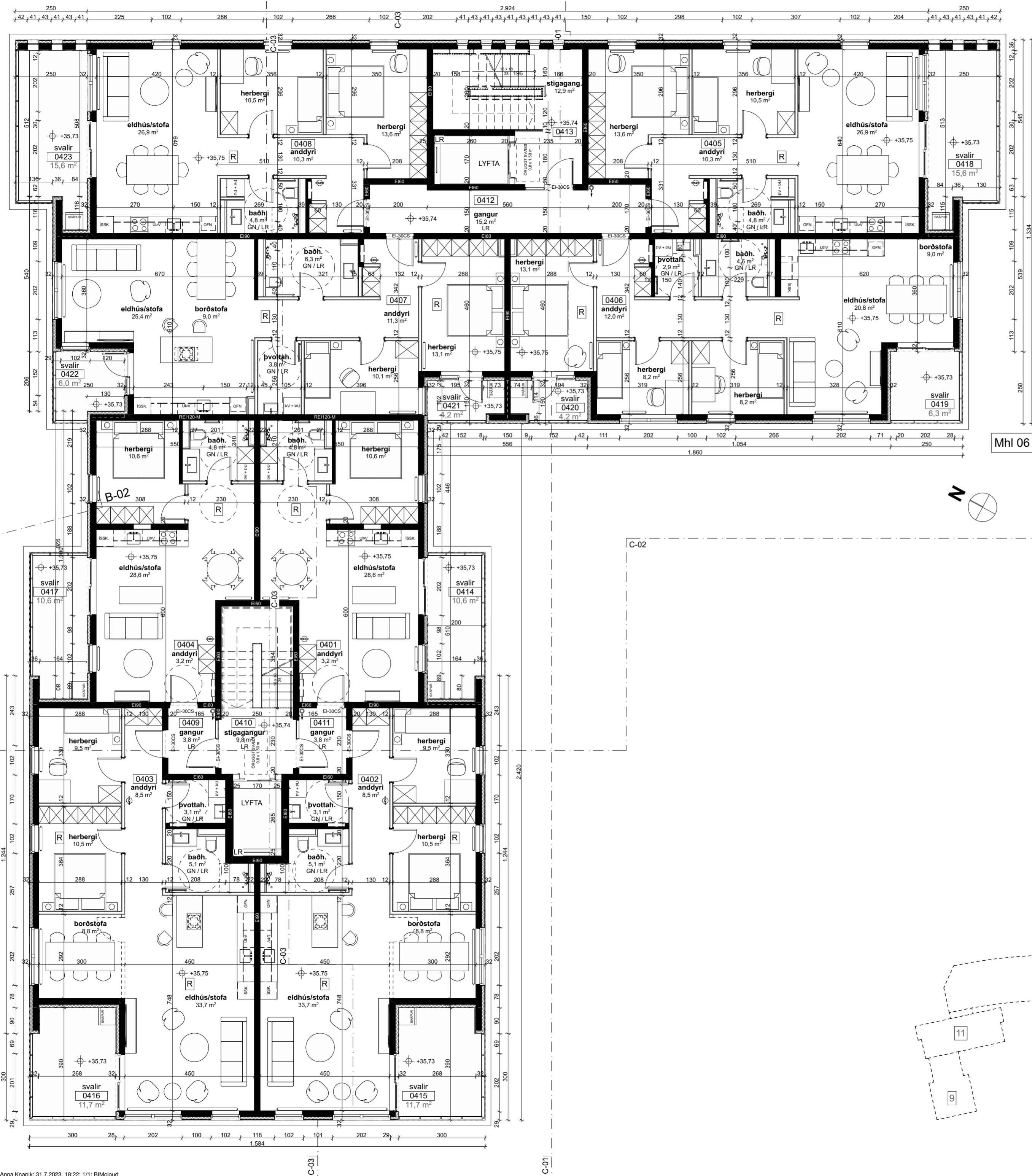
+Arkitektar

Hringhamar 17-19
Hafnarfirði
3.hæð

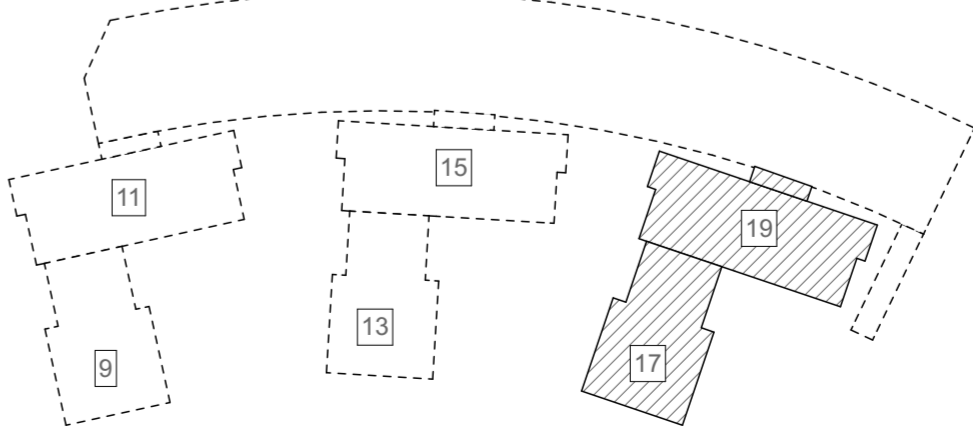
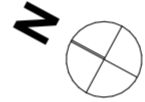
dags.	9.11.2022
mkv.	1:100
teikn.	AB, AK, ÁK, AMK, JK
verknr.	2201

Öl máli samþykkið á staðnum. Hafa skal samband við hönnuði ef ósamræmis gæti.





Mhi 06



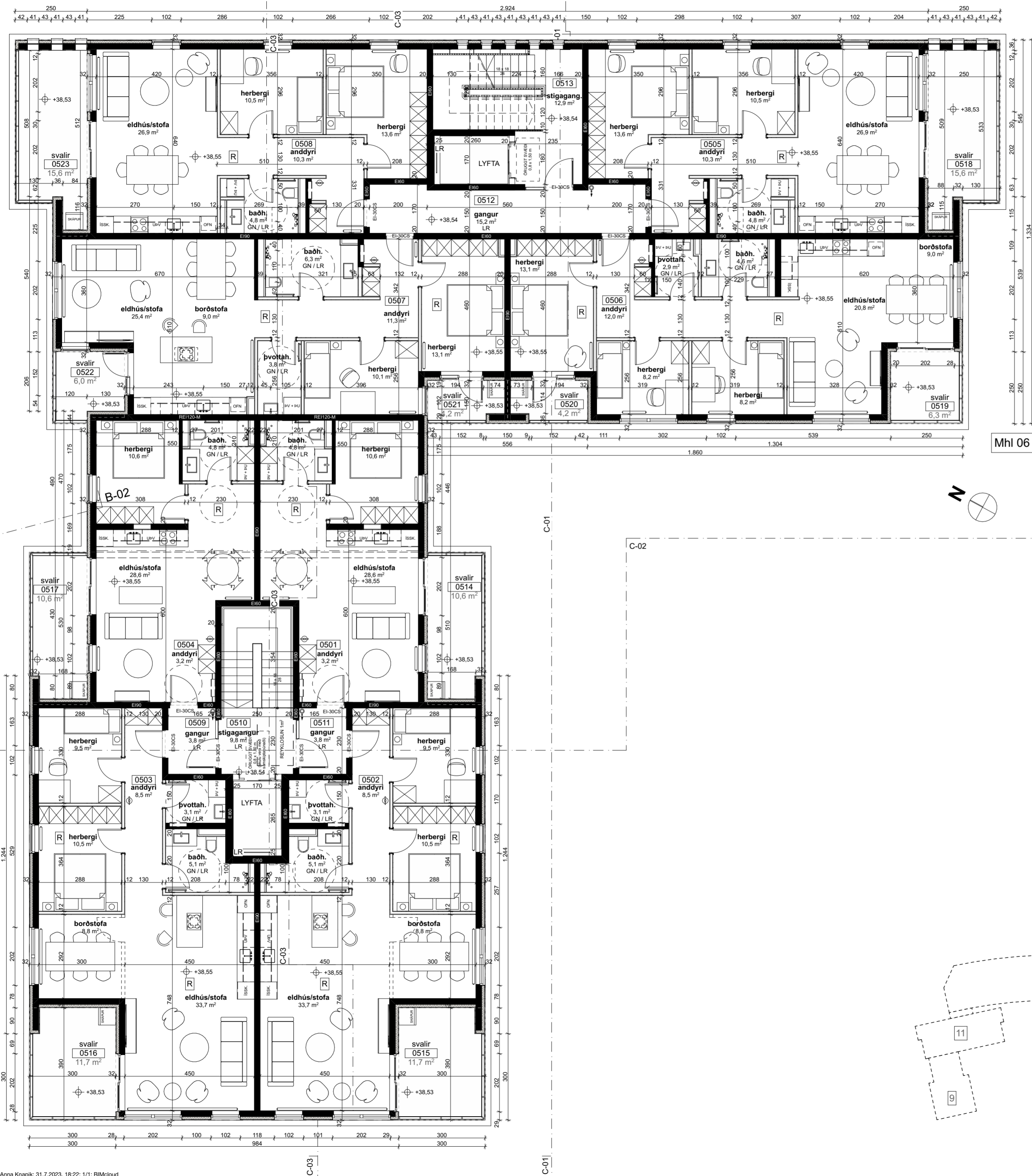
+Arkitektar

Hringhamar 17-19
Hafnarfirði
4.hæð

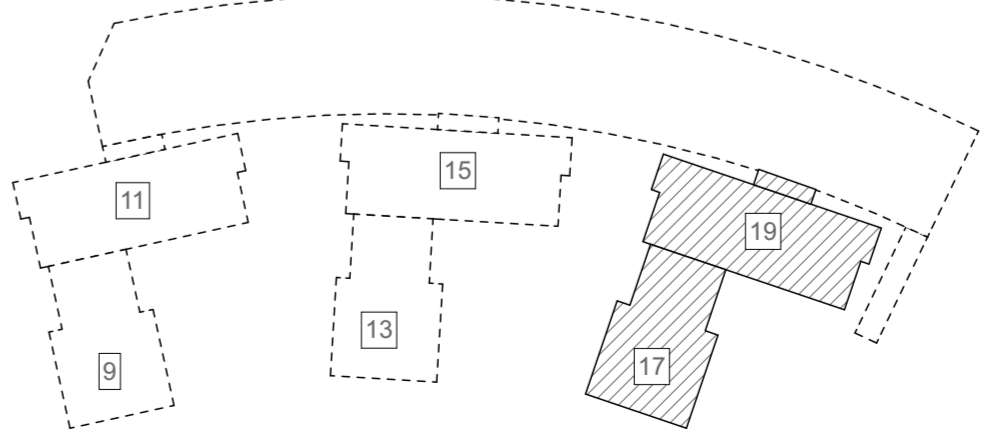
dags.	9.11.2022
mkv.	1:100
teikn.	AB, AK, ÁK, AMK, JK
verknr.	2201

Öl máli samþrygð á staðnum. Hafa skal samband við hönnuði ef ósamræmis gæti.





Mhi 06

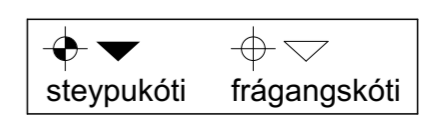


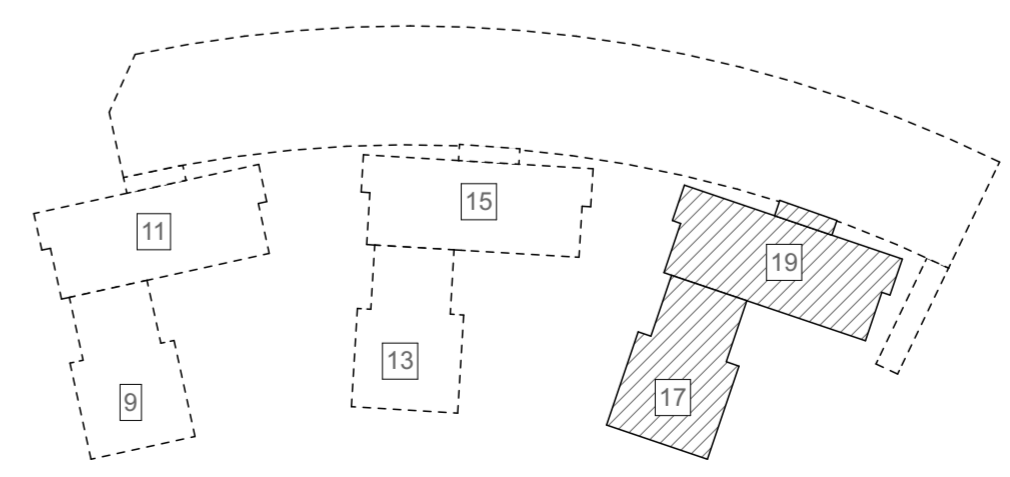
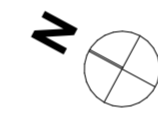
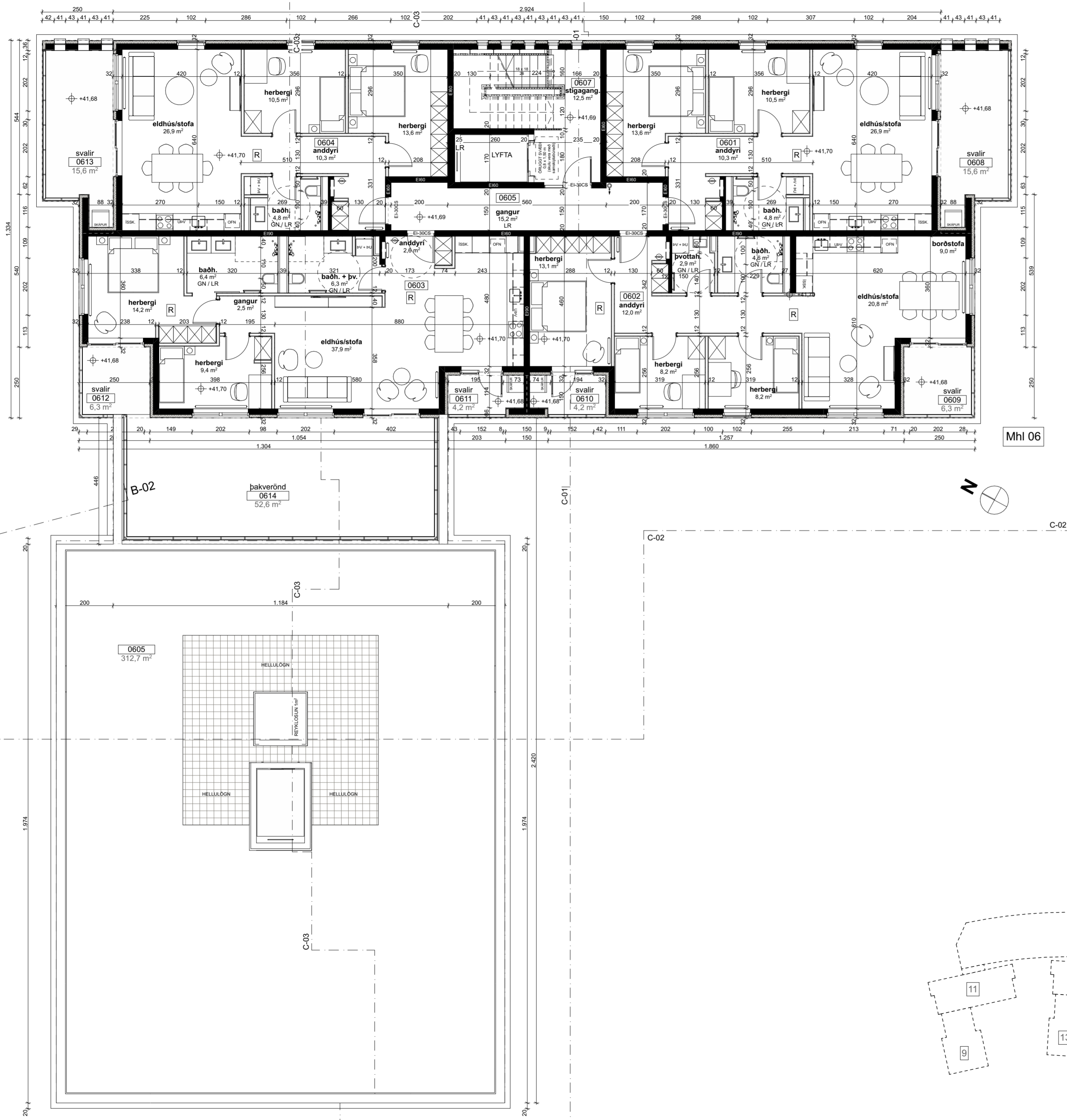
+Arkitektar

Hringhamar 17-19
Hafnarfirði
5.hæð

dags.	9.11.2022
mkv.	1:100
teikn.	AB, AK, ÁK, AMK, JK
verknr.	2201

Öl má samnýmist á staðnum. Hafa skal samband við hönnuði ef ósamræmis gæti.



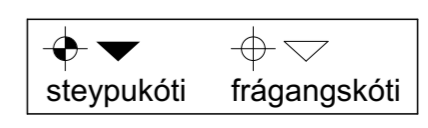


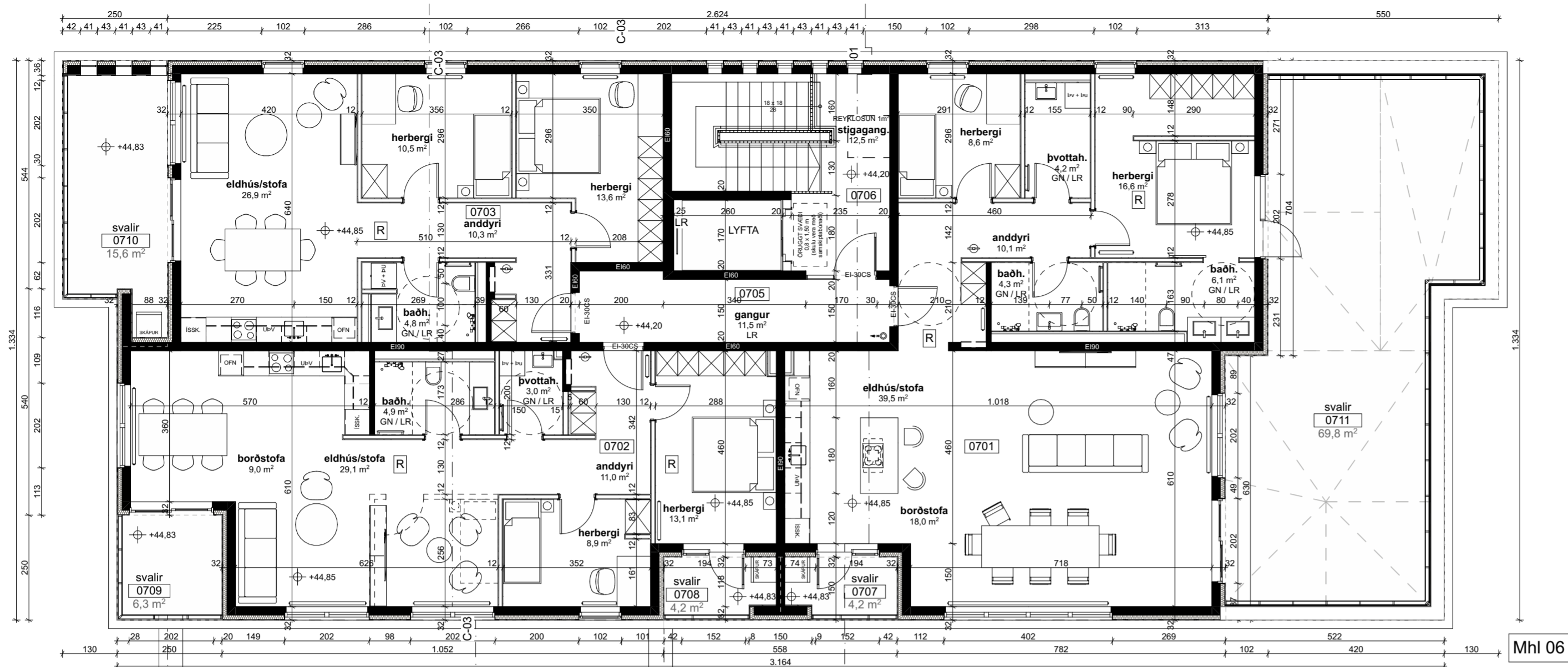
+Arkitektar

Hringhamar 17-19
Hafnarfirði
6.hæð

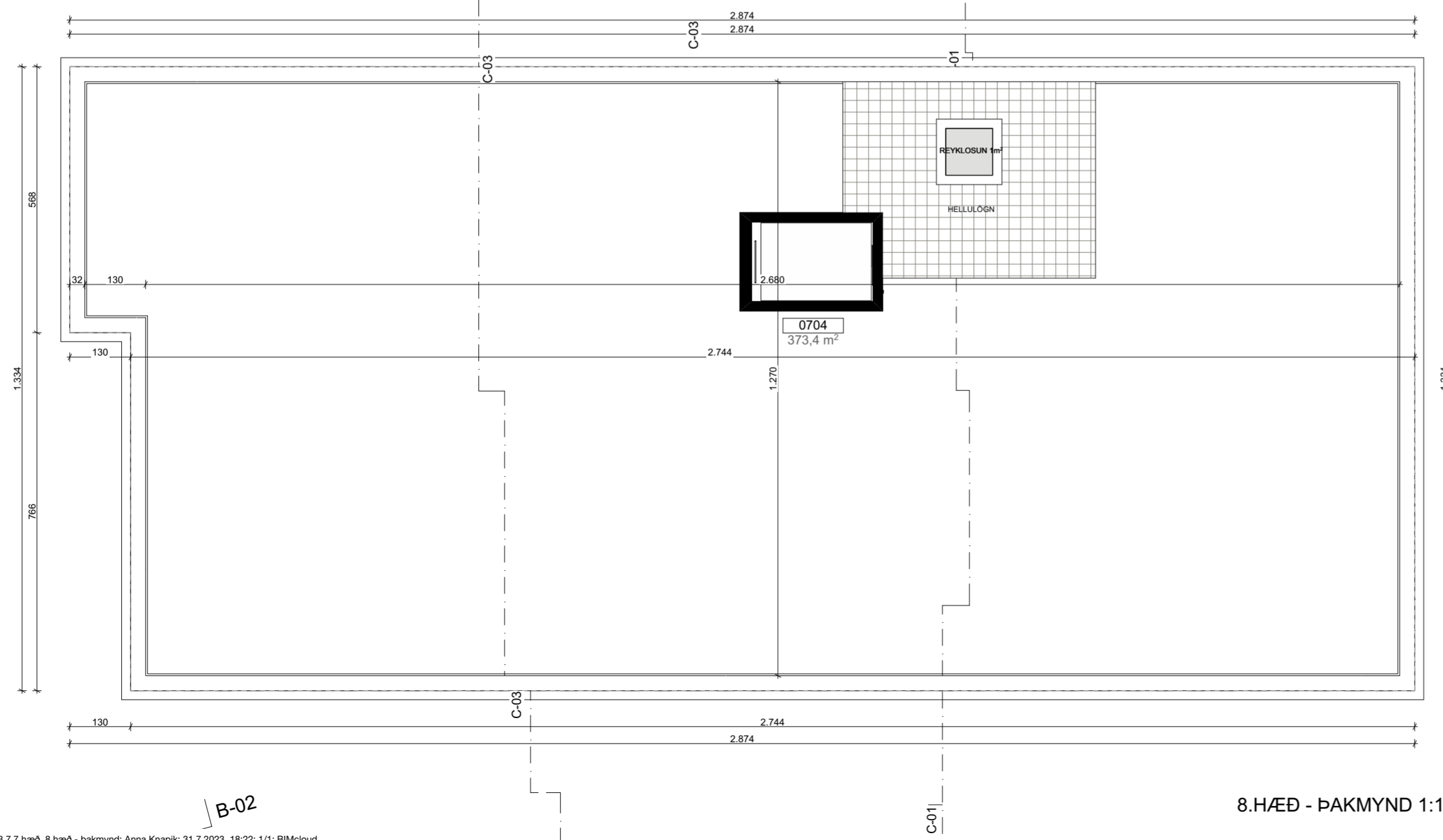
dags.	9.11.2022
mkv.	1:100
teikn.	AB, AK, ÁK, AMK, JK
verknr.	2201

Öf máli samþrygð á staðnum. Hafa skal samband við hönnuði ef ósamræmis gæfir.

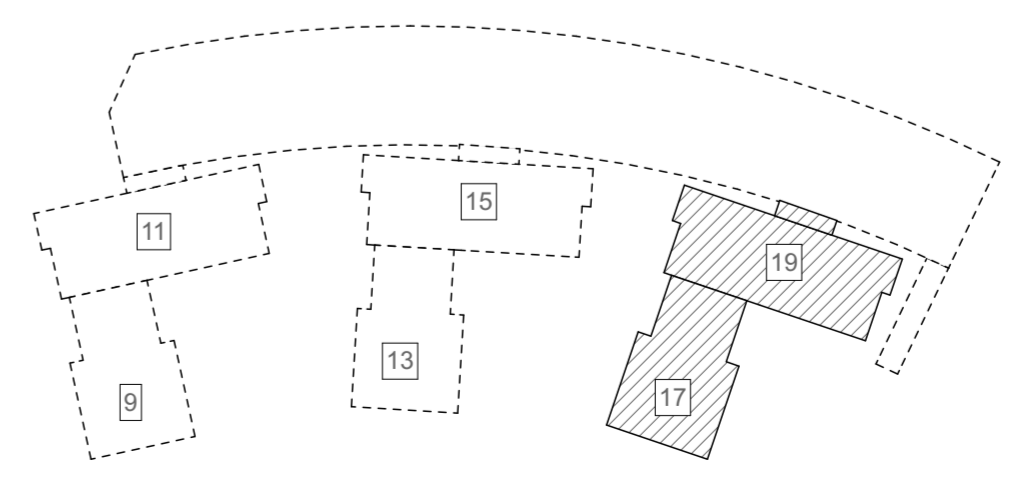




7.HÆÐ 1:100



8.HÆÐ - ÞAKMYND 1:100

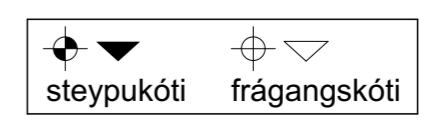


+Arkitektar

Hringhamar 17-19
Hafnarfirði
7.hæð, 8.hæð - þakmynd

dags.	9.11.2022
mkv.	1:100
teikn.	AB, AK, ÁK, AMK, JK
verknr.	2201

Öf máli samþrykt á staðnum. Hafa skal samband við hönnuði ef ósamræmis gæfir.

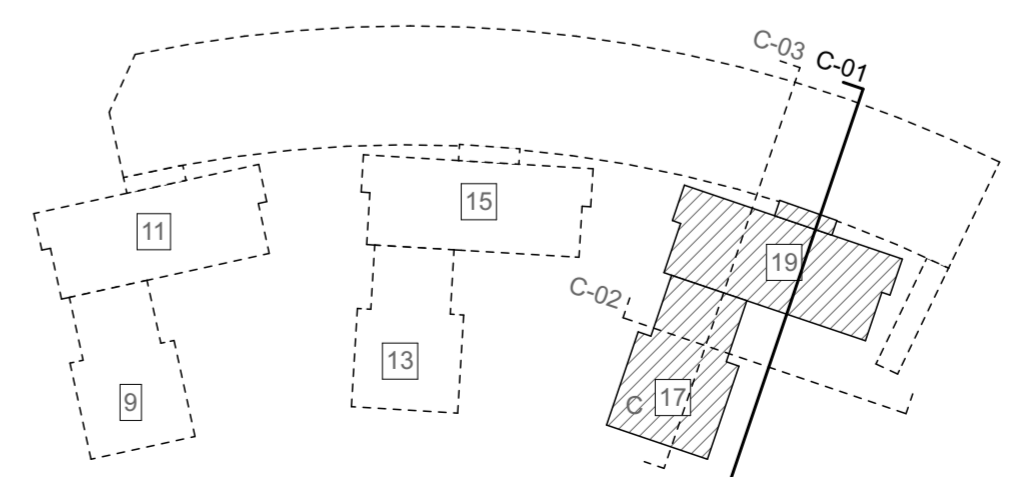




C-01

Snið

1:100



+Arkitektar

Hringhamar 17-19
Hafnarfirði
Snið C-01

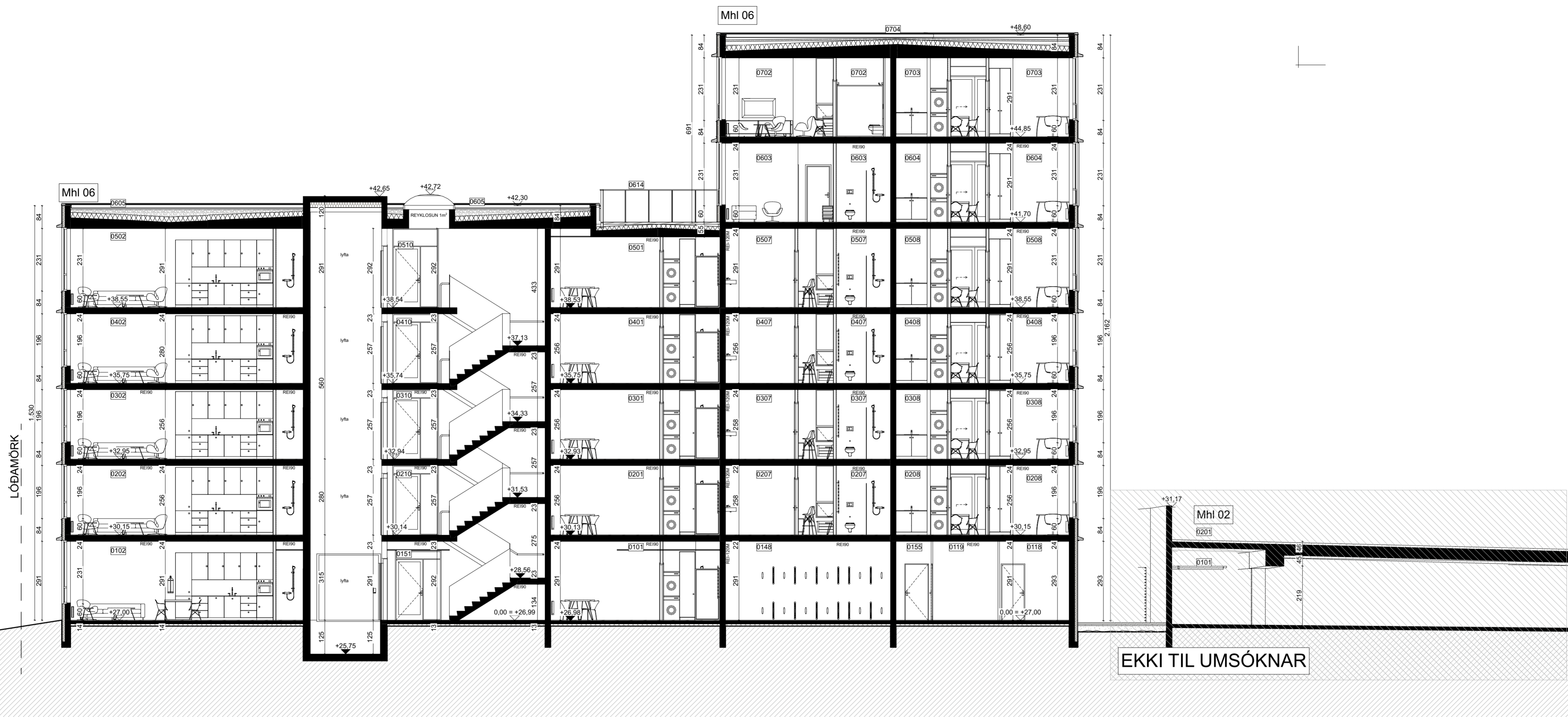
dags.	9.11.2022
mkv.	1:100
teikn.	AB, AK, ÁK, AMK, JK
verknr.	2201

Öl máli samrýmist á staðnum. Hafa skal samband við hönnuði ef ósamræmis gæfir.



Haraldur Ingvarsson arkitekt 030956-3389 hi@plusark.is
Páll Hjaltason arkitekt 070859-2119 ph@plusark.is
Fiskistóð 31 101 Reykjavík 562-5959 www.plusark.is

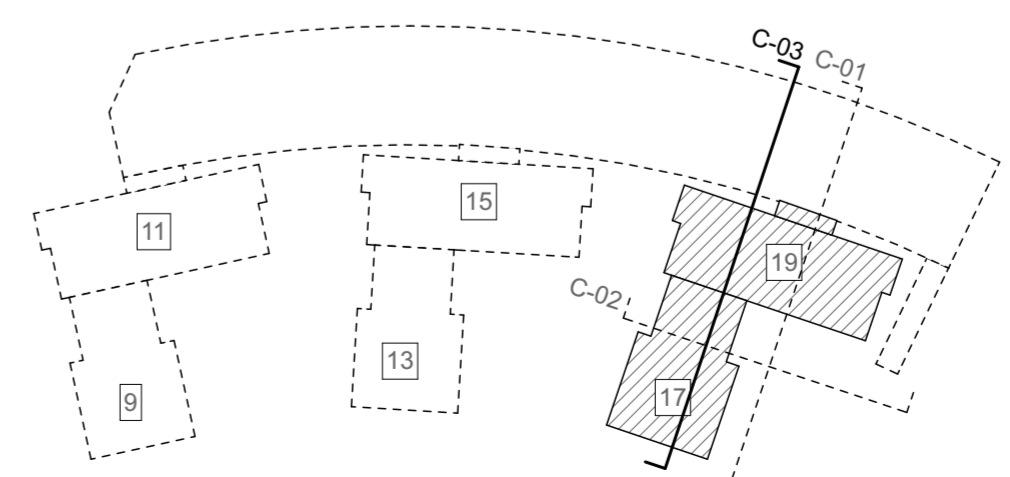
TEIKNING 11 AF 19
A.4.1



C-03

Snið

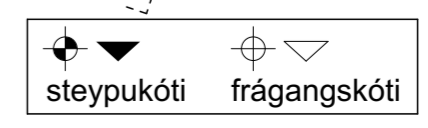
1:100



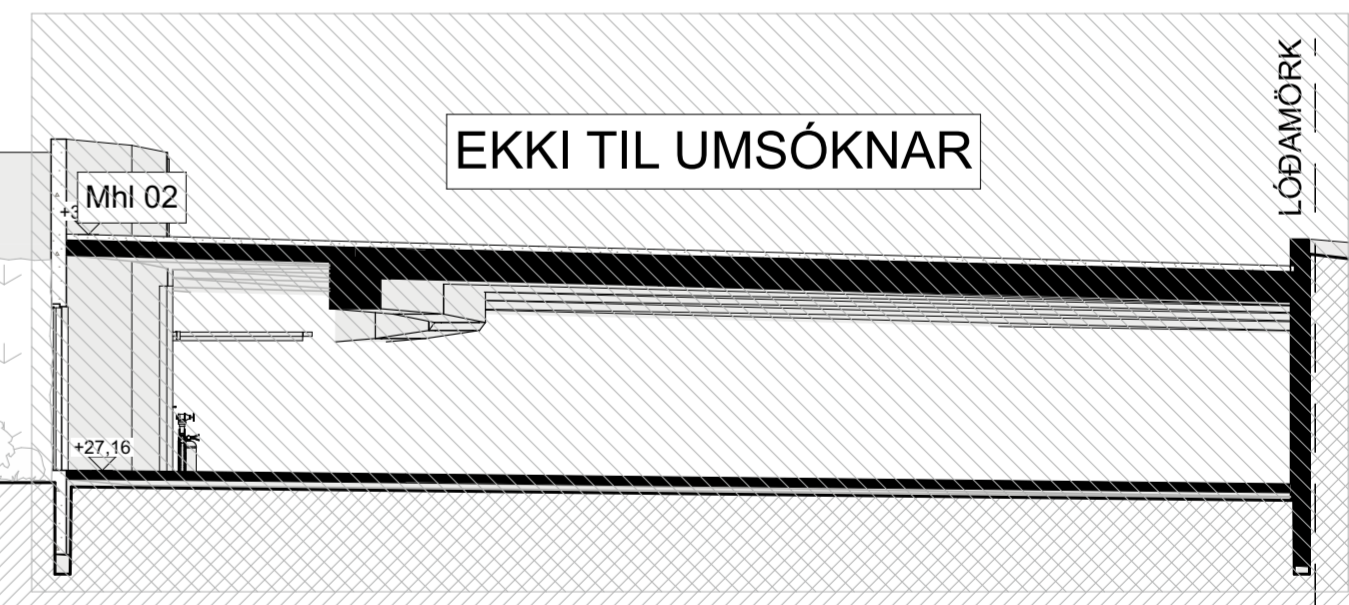
+Arkitektar
 Hringhamar 17-19
 Hafnarfirði
 Snið C-03

dags.	9.11.2022
mkv.	1:100
teikn.	AB, AK, ÁK, AMK, JK
verknr.	2201

Öl máli samþryggt á staðnum. Hafa skal samband við hönnuði ef ósamræmis gæfir.



Haraldur Ingvarsson arkitekt 030956-3389 hi@plusark.is
 Páll Hjaltason arkitekt 070859-2119 ph@plusark.is
A.4.3
Fiskistóð 31 101 Reykjavík 562-5959 www.plusark.is



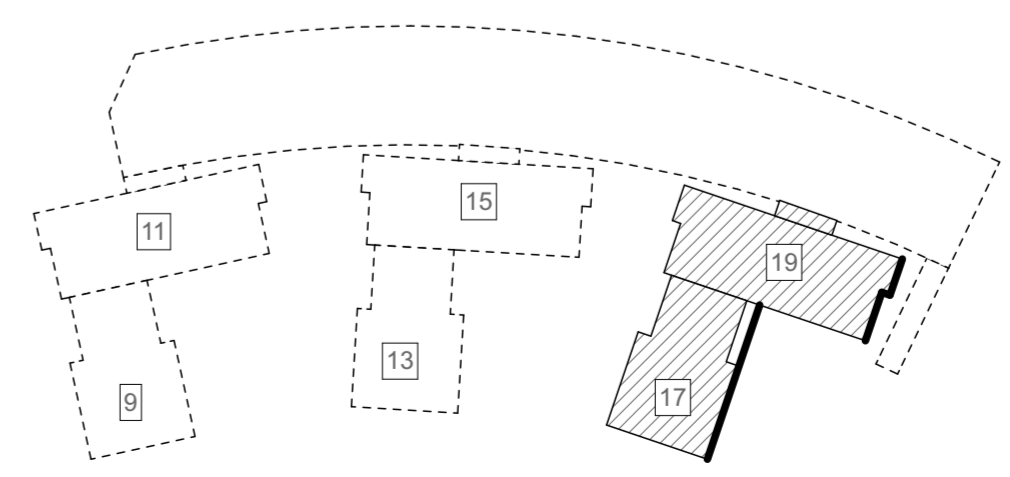
LÖÐAMÖRK

LÖÐAMÖRK

C.SA

Suðaustur

1:100

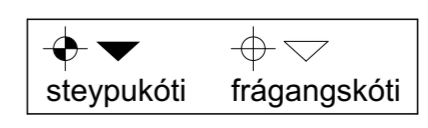


+Arkitektar

Hringhamar 17-19
Hafnarfirði
Útlit C.SA // Suðaustur

dags.	9.11.2022
mkv.	1:100
teikn.	AB, AK, ÁK, AMK, JK
verknr.	2201

Öl máli samrýmist á staðnum. Hafa skal samband við hönnuði ef ósamræmis gæfir.





LÓÐAMÖRK

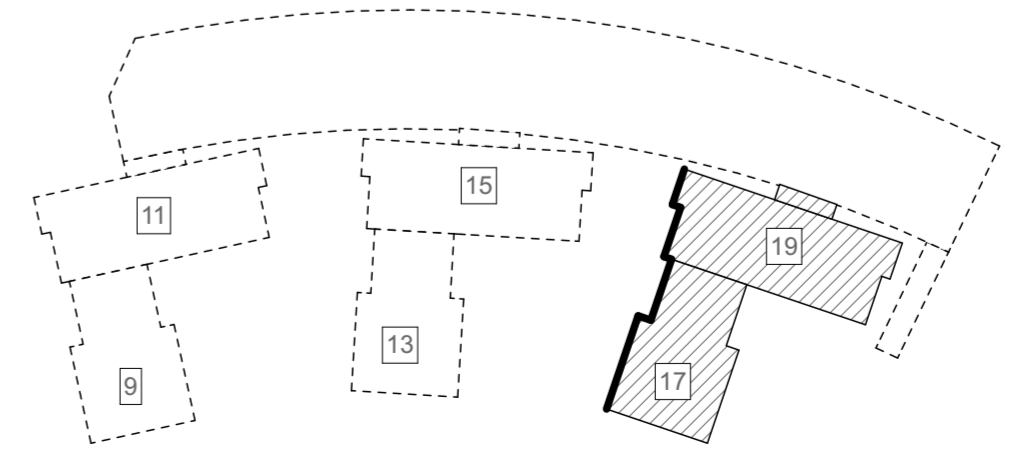
LÓÐAMÖRK

EKKI TIL UMSÓKNAR

C.NV

Norðvestur

1:100

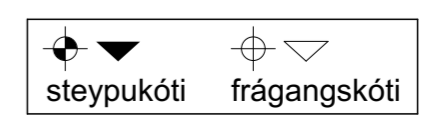


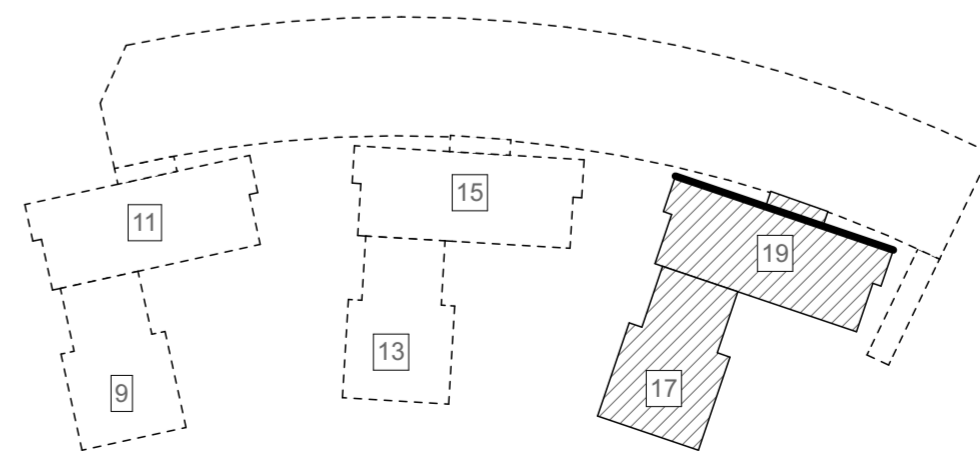
+Arkitektar

Hringhamar 17-19
Hafnarfirði
Útlit C.NV // Norðvestur

dags.	9.11.2022
mkv.	1:100
teikn.	AB, AK, ÁK, AMK, JK
verknr.	2201

Öl máli samrýmist á staðnum. Hafa skal samband við hönnuði ef ósamræmis gæfir.





+Arkitektar

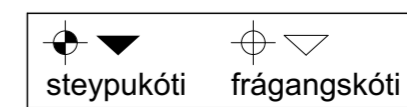
Hringhamar 17-19
Hafnarfirði

Útlit C.NA // Norðaustur



dags.	9.11.2022
mkv.	1:100
teikn.	AB, AK, ÁK, AMK, JK
verknr.	2201

Öl má samrýmist á staðnum. Hafa skal samband við hönnuði ef ósamræmis gæfir.

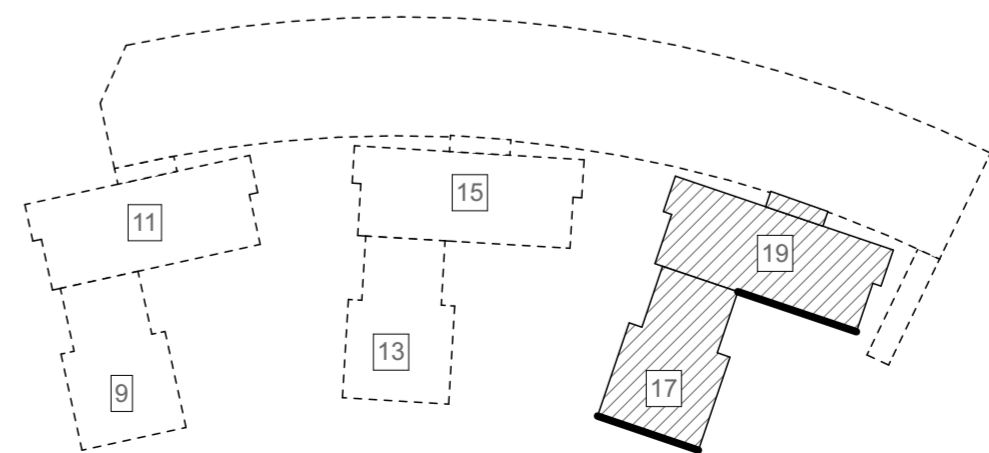


Haraldur Ingvarsson arkitekt 030956-3389 hi@plusark.is
Páll Hjaltason arkitekt 070859-2119 ph@plusark.is

TEIKNING 16 AF 19

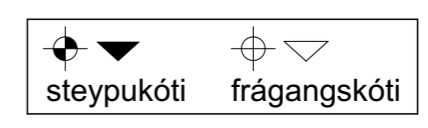
A.5.3

Fiskistóð 31 101 Reykjavík 562-5959 www.plusark.is



+Arkitektar		
Hringhamar 17-19		dags. 9.11.2022
Hafnarfirði		mkv. 1:100
Útlit C.SV // Suðvestur		teikn. AB, AK, ÁK, AMK, JK
		verknr. 2201

Öl máli samrýmist á staðnum. Hafa skal samband við hönnuði ef ósamræmis gæfir.



Skráningartaflla: Hringhamar 17-19, Hafnarfirjörður		Skrásetjari: Anna Bléka		Kennitala: 280481-4599		Dags.: 31.10.2022		Ag fa: 5.00																															
Landeignanúmer: L231980		Matslutunúmer: 06		Stærðir		D0		D1		D2		D3		D4		D5		D6		D7		D8		D9		D10a		D10b		D11		D12		D13		D14		D15	
Lokun		Rými hæð-röð	Nafn losi	Höfuð-flokkun	Eignar-hald	Bornflur m²	Milliflur m²	Stígar m²	Op m²	Brúflur m²	Brúflur sh < 1.8	Salarhæð min	Salarhæð max	Brúflur m²	Nettflur m²	Birtiflur m²	Rekklata skiptarmáls	Skipta-rúmmál m³																					
		Matshluti				5.012,0	0,0	79,5	36,9	4.289,0	686,1			13.298,9	3.597,0	3.623,5			9.798,458																				
		Botn												156,8																									
		01		1. Hæð		780,4	0,0	17,8	1,5	778,9	0,0			2.458,3	651,5	480,5																							
A	0101		ibuð	N	0101	54,4				54,4		3,15	3,15	171,4	47,3	54,4	3,15	148,995																					
A	0102		ibuð	N	0102	79,8				79,8		3,15	3,15	251,4	68,6	79,8	3,15	216,090																					
A	0103		ibuð	N	0103	80,8				80,8		3,15	3,15	254,5	68,6	80,8	3,15	216,090																					
A	0104		ibuð	N	0104	57,8				57,8		3,15	3,15	182,1	49,7	57,8	3,15	156,555																					
A	0105		geymsla	N	0201	4,4				4,4		3,15	3,15	13,9	3,4	4,4	3,15	10,710																					
A	0106		geymsla	N	0204	4,5				4,5		3,15	3,15	14,2	3,4	4,5	3,15	10,710																					
A	0107		geymsla	N	0301	4,0				4,0		3,15	3,15	12,6	3,0	4,0	3,15	9,450																					
A	0108		geymsla	N	0304	3,8				3,8		3,15	3,15	12,0	3,0	3,8	3,15	9,450																					
A	0109		geymsla	N	0401	3,8				3,8		3,15	3,15	12,0	3,1	3,8	3,15	9,765																					
A	0110		geymsla	N	0404	3,7				3,7		3,15	3,15	11,7	3,1	3,7	3,15	9,765																					
A	0111		geymsla	N	0205	3,8				3,8		3,15	3,15	12,0	3,1	3,8	3,15	9,765																					
A	0112		geymsla	N	0208	4,2				4,2		3,15	3,15	13,2	3,4	4,2	3,15	10,710																					
A	0113		geymsla	N	0502	4,9				4,9		3,15	3,15	15,4	4,6	4,9	3,15	14,490																					
A	0114		geymsla	N	0503	6,1				6,1		3,15	3,15	19,2	4,7	6,1	3,15	14,805																					
A	0115		geymsla	N	0305	4,7				4,7		3,15	3,15	14,8	3,2	4,7	3,15	10,080																					
A	0116		geymsla	N	0308	4,3				4,3		3,15	3,15	13,5	3,2	4,3	3,15	10,080																					
A	0117		geymsla	N	0405	4,3				4,3		3,15	3,15	13,5	3,2	4,3	3,15	10,080																					
A	0118		geymsla	N	0408	4,3				4,3		3,15	3,15	13,5	3,5	4,3	3,15	11,025																					
A	0119		geymsla	N	0501	3,6				3,6		3,15	3,15	11,3	3,2	3,6	3,15	10,080																					
A	0120		geymsla	N	0504	3,5				3,5		3,15	3,15	11,0	3,2	3,5	3,15	10,080																					
A	0121		geymsla	N	0505	3,5				3,5		3,15	3,15	11,0	3,2	3,5	3,15	10,080																					
A	0122		geymsla	N	0403	5,3				5,3		3,15	3,15	16,7	4,6	5,3	3,15	14,490																					
A	0123		geymsla	N	0402	5,0				5,0		3,15	3,15	15,8	4,6	5,0	3,15	14,490																					
A	0124		geymsla	N	0303	5,0				5,0		3,15	3,15	15,8	4,6	5,0	3,15	14,490																					
A	0125		geymsla	N	0302	5,3				5,3		3,15	3,15	16,7	4,6	5,3	3,15	14,490																					
A	0126		geymsla	N	0203	4,6				4,6		3,15	3,15	14,5	4,0	4,6	3,15	12,600																					
A	0127		geymsla	N	0202	4,4				4,4		3,15	3,15	13,9	4,0	4,4	3,15	12,600																					
A	0128		geymsla	N	0103	4,3				4,3		3,15	3,15	13,5	4,0	4,3	3,15	12,600																					
A	0129		geymsla	N	0102	4,4				4,4		3,15	3,15	13,9	4,0	4,4	3,15	12,600																					
A	0130		geymsla	N	0101	5,1				5,1		3,15	3,15	16,1	4,5	5,1	3,15	14,175																					
A	0131		geymsla	N	0104	3,9				3,9		3,15	3,15	12,3	3,3	3,9	3,15	10,395																					
A	0132		geymsla	N	0207	5,2				5,2		3,15	3,15	16,4	4,2	5,2	3,15	13,230																					
A	0133		geymsla	N	0306	5,2				5,2		3,15	3,15	16,4	4,2	5,2	3,15	13,230																					
A	0134		geymsla	N	0307	5,2				5,2		3,15	3,15	16,4	4,2	5,2	3,15	13,230																					
A	0135		geymsla	N	0702	7,5				7,5		3,15	3,15	23,6	5,5	7,5	3,15	17,325																					
A	0136		geymsla	N	0701	9,0				9,0		3,15	3,15	28,4	7,1	9,0	3,15	22,365																					
A	0137		geymsla	N	0508	4,9				4,9		3,15	3,15	15,4	3,9	4,9	3,15	12,285																					
A	0138		geymsla	N	0602	5,6				5,6		3,15	3,15	17,6	3,9	5,6	3,15	12,285																					
A	0139		geymsla	N	0603	5,4				5,4		3,15	3,15	17,0	4,6	5,4	3,15	14,490																					
A	0140		geymsla	N	0703	6,2				6,2		3,15	3,15	19,5	4,6	6,2	3,15	14,490																					
A	0141		geymsla	N	0604	4,9				4,9		3,15	3,15	15,4	3,9	4,9	3,15	12,285																					
A	0142		geymsla	N	0601	5,0				5,0		3,15	3,15	15,8	4,6	5,0	3,15	14,490																					
A	0143		geymsla	N	0603	5,1				5,1		3,15	3,15	16,1	4,6	5,1	3,15	14,490																					
A	0144		geymsla	N	0602	4,8				4,8		3,15	3,15	15,1	4,2	4,8	3,15	13,230																					
A	0145		geymsla	N	0407	4,9				4,9		3,15	3,15	15,4	4,2	4,9	3,15	14,490																					
A	0146		geymsla	N	0406	5,0				5,0		3,15	3,15	15,8	4,6	5,0	3,15	14,490																					
A	0147		geymsla	N	0206	5,1				5,1		3,15	3,15	16,1	4,5	5,1	3,15	14,175																					
A	0148		vagna- og hjólag.	N	X	83,4				83,4		3,15	3,15	262,7	76,1																								
A	0149		verkstæði	N	X	12,5				12,5		3,15	3,15	39,4	10,6																								
A	0150		anddyri	U	X	5,6				5,6		3,15	3,15	17,6	4,1																								
A	0151		stígagangur	U	X	22,0		8,9		22,0		3,15	3,15	69,3	9,8																								
A	0152		gangur	U	X	7,2				7,2		3,15	3,15	22,7	5,9																								
A	0153		anddyri	U	X	7,6				7,6		3,15	3,15	23,9	6,0																								
A	0154		gangur	U	X	15,8				15,8		3,15	3,15	49,8	14,2																								
A	0155		gangur	U	X	31,4				31,4		3,15	3,15	98,9	29,2																								
A	0156		anddyri	U	X	11,3				11,3		3,15	3,15	35,6	9,5																								
A	0157		gangur	U	X	5,3				5,3		3,15	3,15	16,7	4,4																								
A	0158		stígagangur	U	X	26,8		8,9	1,5	25,3		3,15	3,15	84,4	13,0																								
A	0159		anddyri	U	X	18,4				18,4		3,15	3,15	58,0	16,0																								
A	0160		gangur	U	X	32,6				32,6		3,15	3,15	102,7	30,5																								
A	0161		rafmagn	T	X	8,8				8,8		3,15	3,15	27,7	6,2																								
A	0162		lagmir	T	X	11,2				11,2		3,15	3,15	35,3	8,9																								
B	0163		aðkomusvæði	U	X	9,0				9,0																													
		02		2. Hæð		705,6	0,0	17,2	1,5	704,1	0,0			1.975,7	588,3	618,8																							
A	0201		ibuð	N	0201	54,4				54,4		2,80	2,80	152,3	47,3	54,4	2,80	132,440																					
A	0202		ibuð	N	0202	91,6				91,6		2,80	2,80	256,5	79,2	91,6	2,80	221,760																					
A	0203		ibuð	N	0203	91,6				91,6		2,80	2,80	256,5	79,2	91,6	2,80	221,760																					
A	0204		ibuð	N	0204	54,4				54,4		2,80																											

